



HIGHLY ENGINEERED, PRECISION,
FLIGHT CRITICAL ASSEMBLIES &
CONTROL SYSTEMS

OVERVIEW

WE OFFER COMPLETE AEROSPACE MANUFACTURING SOLUTIONS **THROUGH ONE DIRECT SOURCE**

At PCX Aerosystems, our broad range of specialized machining capabilities has positioned us to become the trusted supplier we are today. Throughout the decades, we have built a reputation for excellence in precision machining and complex fabrications.

As a leading source for 3-, 4-, and high speed 5-axis machining, PCX produces rotorhead assemblies and control systems, landing gear assemblies, external fuel tank systems, engine and structural airframe components in addition to composite fabrications.

Our expertise lies in producing complex parts where tight tolerances and stringent quality are imperative. This core strength extends to machining a variety of metals from aluminum and magnesium to hard alloys including titanium, Inconel and steel.

Integrated assembly capabilities allow us to offer complete structural airframe assemblies ready for delivery direct to Tier 1 or OEM integration centers. We provide increased customer value through in-house special processing such as heat treating, painting, resin coating and non-destructive testing.

Dedication to quality and delivery is reflected in every part we produce. We invest in customer partnerships, focusing on Lean manufacturing and offering Design for Manufacturing analysis on a variety of aerospace platforms.



PRECISION MACHINING

As a trusted source for Critical Safety Items and complex assemblies, we utilize advanced machining technology to work with a wide range of materials from aluminum to hard metal alloys including titanium, Inconel and steel. Our ability to manufacture parts with tight tolerances has positioned us as a world class supplier of highly engineered parts for commercial and military aircraft customers as well as the power generation market.

PCX facilities are equipped with a wide range of machining centers tailored to support specialized customer needs like milling, grinding, turning and boring, ID, OD and surface grinding, cylindrical grinding, internal spline shaping and gear cutting, shaping and broaching.

Our diverse equipment capability includes 3-, 4- and 5-axis milling and turning equipment. We house multiple state-of-the-art DMC duoBLOCK 5-axis milling machines and 5-axis Gantry machines with a capability range up to 20'.

High speed manufacturing processes are utilized in the fabrication of wing and fuselage components, engine pylon mounts, wing ribs, bulkheads, fittings and frames.

As a trusted manufacturing source, PCX maintains the highest levels of product quality and traceability in the aerospace industry. Our dedication to quality has allowed us to develop a reputation for reliability and performance.





PRECISION MACHINING

**ROTORHEAD ASSEMBLIES
& CONTROL SYSTEMS**

**ENGINE & STRUCTURAL
AIRFRAME COMPONENTS**

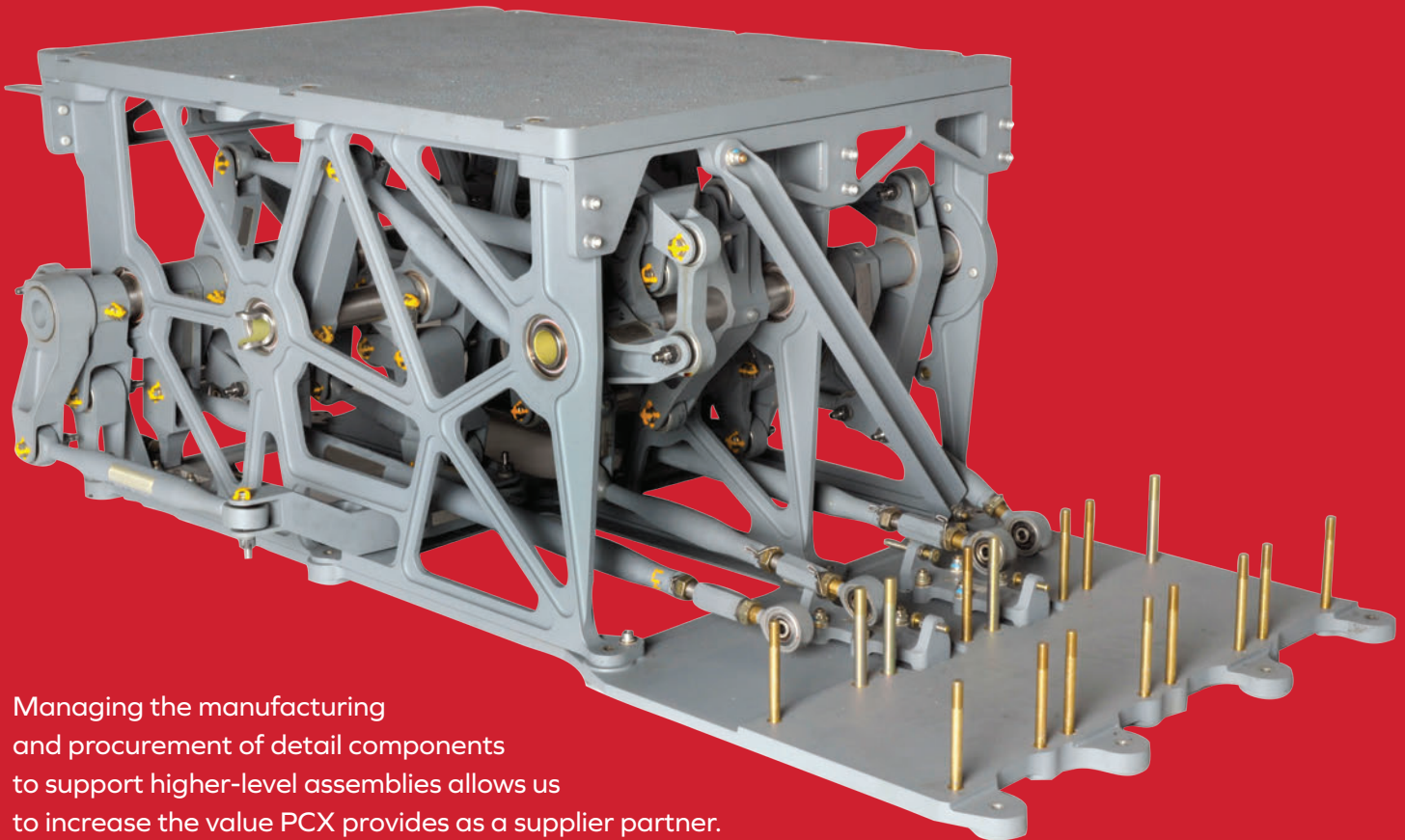
**INTEGRATED PROCESSING
CAPABILITIES**

ASSEMBLY

As system integrators, PCX has developed the capability to produce value-added mechanical assemblies for aerospace and defense OEM's. We incorporate manufactured components and sourced parts into higher-level assemblies. These are delivered at the aircraft build rate and installed directly onto each specific platform.

OUR SERVICES

- Structural sub-assemblies
- Bushing installation
- Sealants
- Post assembly machining



Managing the manufacturing and procurement of detail components to support higher-level assemblies allows us to increase the value PCX provides as a supplier partner. We have the technical capability to produce monolithic and complex multi-component assemblies in support of aerospace and defense OEMs as they move away from traditional component assembly.

QUALITY & INSPECTION SERVICES

We proudly deliver quality parts that adhere to rigorous and highly specific processes set forth in customer specifications and standards throughout all phases of manufacturing. By adhering to the requirements of the Quality Management System Aerospace Standard, PCX upholds the highest manufacturing processes in support of many leading OEM's around the globe. Our facilities are AS9100D, AS9110C and ISO 9001:2015 registered, and NADCAP certified for a variety of special processes from heat treating to paint and dry film to conversion coating and brush CAD plate.

Using state-of-the-art equipment, we perform thorough testing and evaluation of materials, components and assemblies. This allows us to check for material discontinuities, properties or machining problems without further impairing or destroying the serviceability of a part.

Known for our commitment to precision and reliability, we possess coordinate measure machine capability. Our CMM's run detailed, highly accurate inspection programs for a wide range of aerospace components. We precisely measure objects in a 3D coordinate system, often in comparison to a CAD model. Updated PC-DMIS software is used for the collection, evaluation, management and presentation of manufacturing data.



SPECIAL PROCESSES

CHEMICAL PROCESSING & FINISHING:

- Conversion coating
- Resin coating
- Paint / dry film
- Brush CAD plate

HEAT TREATING

PRECISION HOLE MACHINING

NON-DESTRUCTIVE TESTING (NDT):

- Fluorescent penetrant
- Magnetic particle inspection
- Nital etch
- Eddy current inspection

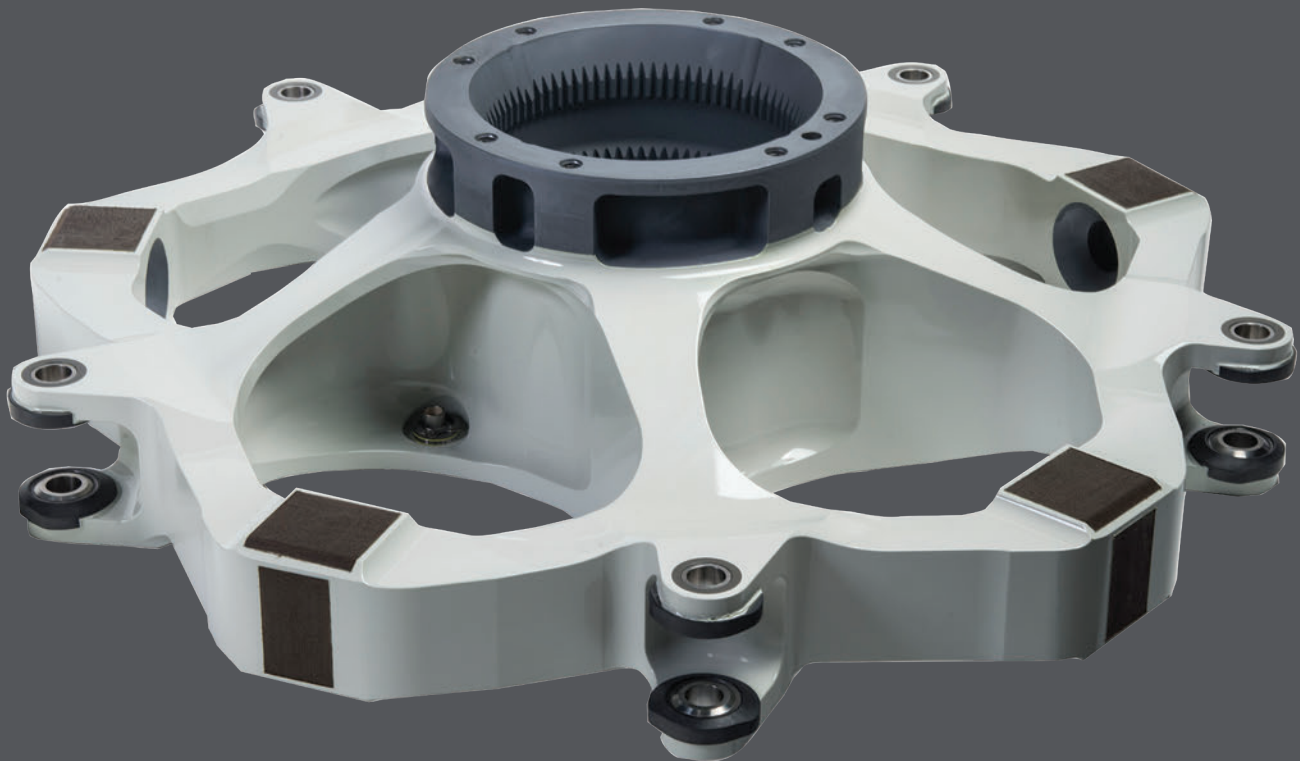
SKILLED ENGINEERING SUPPORT

Our in-house engineering and programming staff utilize the latest versions of CATIA and unigraphics as the primary software for all machining processes. We expertly design fixtures, tooling and programming using the latest CNC technology capable of manufacturing close tolerance products (.0002") from a comprehensive range of alloys, including titanium, Inconel and steel.

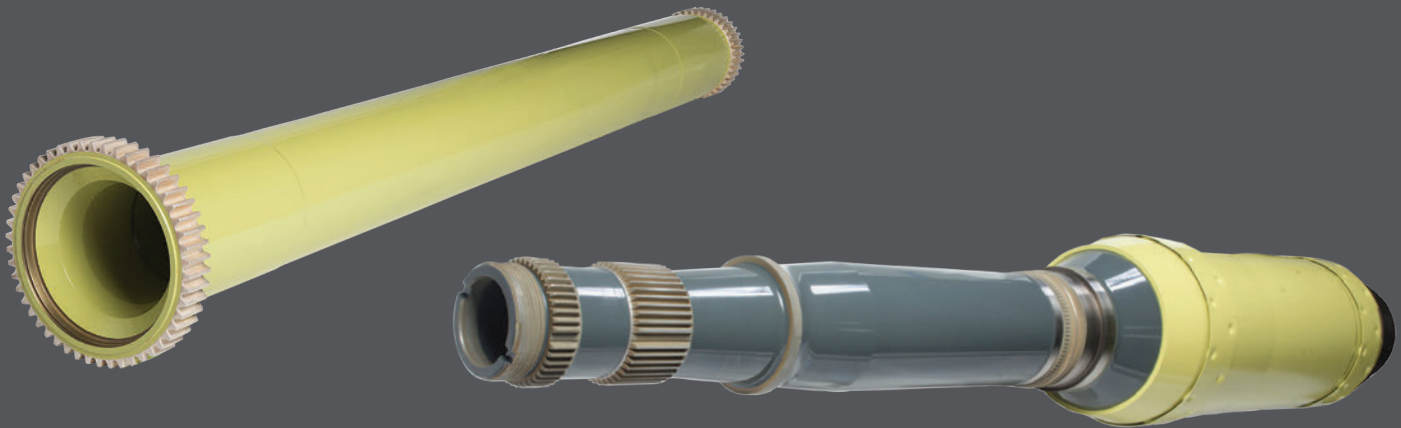
At PCX, our expertise extends to cylindrical component manufacturing as well, including part features that require special machining processes such as spline grinding, hobbing, broaching,

shaping, and threading. Ongoing engineering support is provided throughout all phases of production, inclusive of parts requiring complex work path grinding of angles, faces and radius.

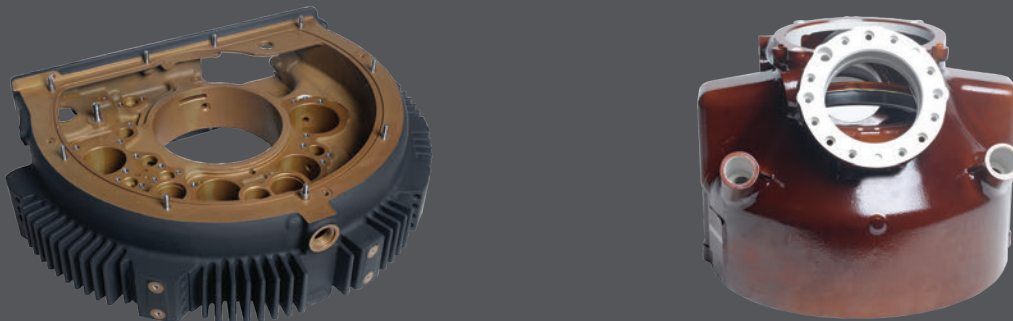
Our professional team provides manufacturing support for many of today's most advanced commercial and military aircraft platforms. We recognize the rigorous and highly specific manufacturing processes set forth in customer specifications and standards — focusing on continuous improvement.



CAPABILITY RANGE UP TO: 60" / 1524 mm

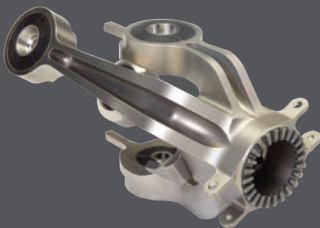
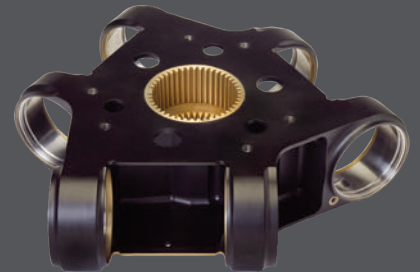
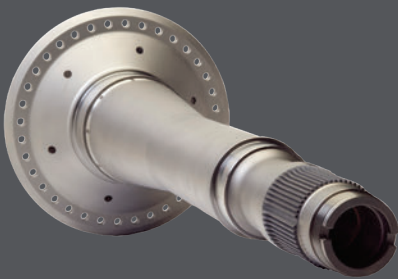
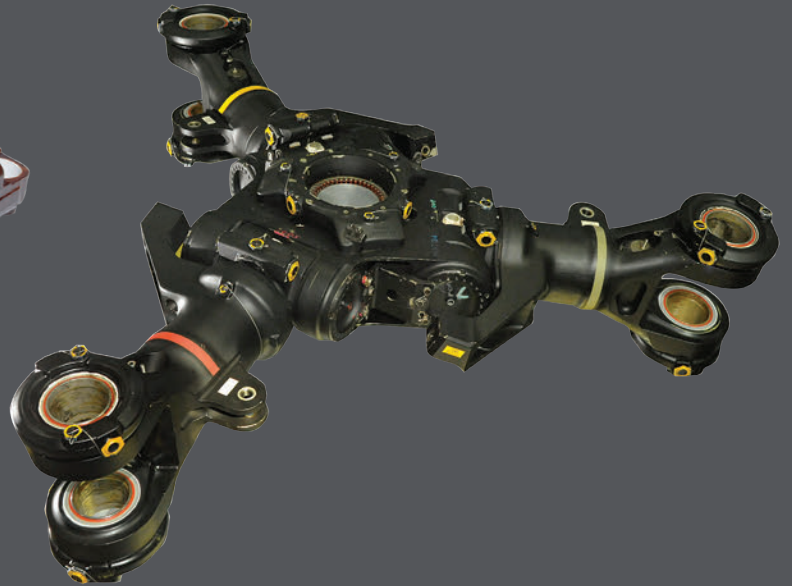
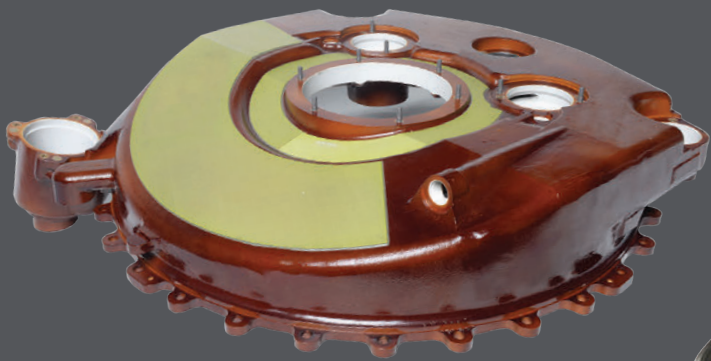


CAPABILITY RANGE: 19" - 36" / 483 mm - 914 mm



CAPABILITY RANGE: 12" - 18" / 305 mm - 457 mm





WORLD-CLASS MANUFACTURING FACILITIES

PCX AEROSYSTEMS COMPANY HEADQUARTERS

300 FENN ROAD
NEWINGTON, CT 06111 USA
860.666.2471

PCX AEROSYSTEMS ENFIELD

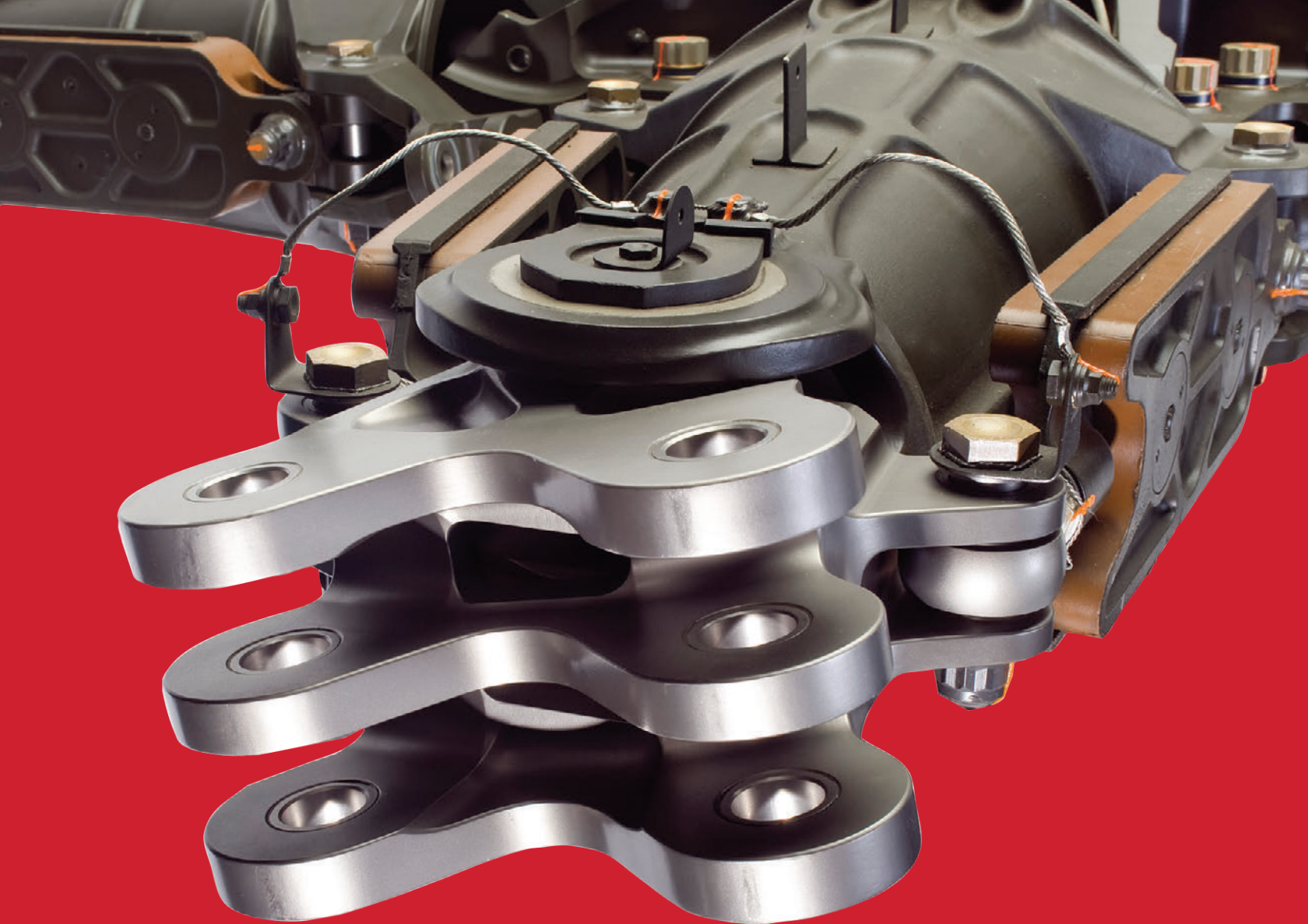
4 PEERLESS WAY
ENFIELD, CT 06082 USA
860.741.2546

PCX AEROSYSTEMS SANTA ANA

2040 E. DYER ROAD
SANTA ANA, CA 92705 USA
949.250.3123

sales@pcxaero.com
pcxaero.com





**MACHINING WITH A
MISSION IN MIND™**



MACHINING WITH A MISSION IN MIND™



pcxaero.com